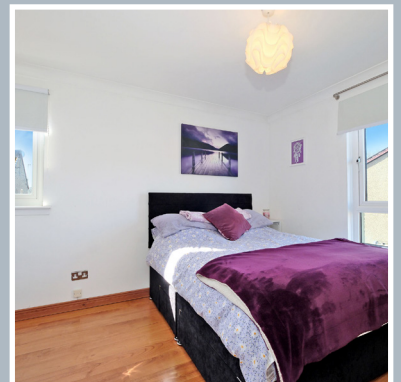
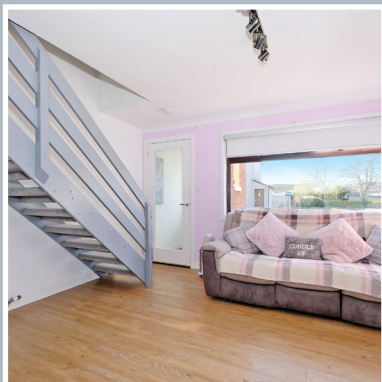




193 Lee Crescent

Bridge of Don, Aberdeen AB22 8FH

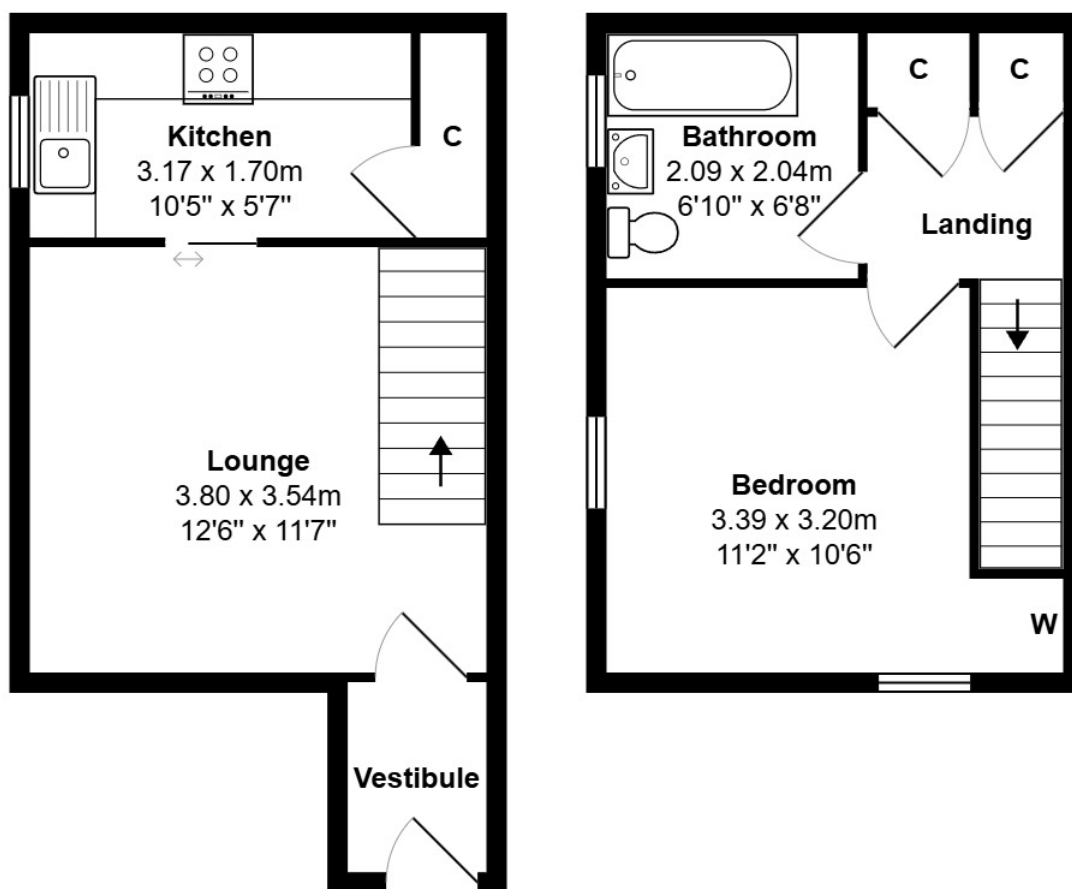


mackinnons
solicitors

We are delighted to offer for sale this charming one bedroom end terraced maisonette with exclusive off street parking and gardens. Located in a quiet cul-de-sac in the thriving suburb of Bridge of Don, the property lies within close proximity to a wide range of amenities and transport links. Ready to move into with a minimum of fuss, this property would be an ideal purchase for a first time buyer, buy-to-let investor or down-sizers.

The welcoming entrance vestibule opens into the well appointed lounge/dining room. With ample space available for both relaxation and formal dining, a sliding door leads into the well appointed kitchen, which includes a range of storage and appliances. On the first floor landing there are two storage cupboards and access to the attic. The double bedroom enjoys dual aspect views, while the bathroom includes a white three piece suite with shower electric shower appliance over the bath.

- Gas Central Heating
- Double Glazing
- Mains Drainage and Water
- One Bedroom
- Exclusive Driveway
- Fully Enclosed Garden



These particulars are intended to give a fair representation of the property and whilst every care has been taken in their compilation they are not guaranteed and do not form part of any contract. Areas, measurements and distances are given only as a guide and any plans are for identification only and are not to scale.

Terms

Council Tax

Band B

EPC

Band C

Entry

By Arrangement

Viewing

Contact Solicitors

01224 868687

OUR services

- Sales
- Purchases
- Leasing
- Property Management
- Wills
- Powers of Attorney
- Estate Planning
- Executries
- Commercial
- Business
- Employment
- Debt Recovery
- Insolvency
- Shipping
- Marine



www.carbonbalancedpaper.com

CBP020715

produced by xtc.com | 01224 878799